

WTA



**A Consulting, CX Design,
Product Engineering, Data & AI Company**

WTA | WE THINK APP, ANALYTICS , AI

At WTA, we enable Fortune 500 companies, SMBs, and startups to adapt to the rapid shifts in latest technology while meeting the ever changing, evolving customer & User demands.

We guide **partners** from **conceptualization to execution**, helping them envision achievable **digital transformations** and fostering agility and speed in their operations. What sets us apart is our holistic approach, combining strategy, **consulting, experience design**, and **engineering** to exceed customer expectations.

We bring a **startup mindset** and **agile methods** to established companies fostering innovation, **delighting customers**, and improving operational **effectiveness**. At WTA, we create value for your customers, at scale and speed.



WTA AT A GLANCE

350+

ROCKSTAR
EMPLOYEES

100+

DIGITAL
PROJECTS

\$10M+

REVENUE
COMBINED

20Y+

TECHNOLOGY
EXPERIENCE

A Part of



Certified by



SERVICE OFFERINGS

Technology Consulting

Customer Experience Design

Product & Platform Engineering

Product Management

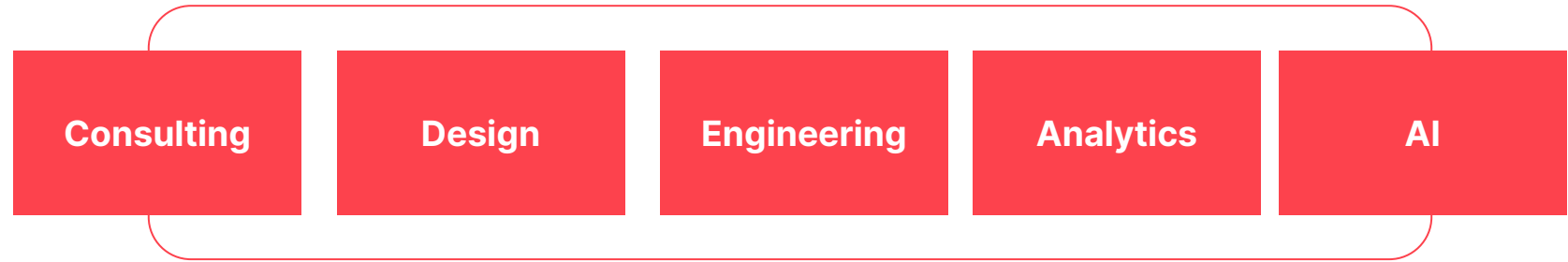
Mobility Solutions

Data & Analytics

Gen AI & ML Solutions

Spatial Computing

CONNECTED DIGITAL TRANSFORMATION



Consulting

Design

Engineering

Analytics

AI

Digital Strategy & Consulting

Business Innovation

CX Transformations

Roadmap Development

AI Ready Consulting

Customer Experience Strategy

Experience Design

Visual Design

Generative AI Design

Customer Analytics

Product & Platform Engineering

Software Implementation

Enterprise Application Modernization

AI driven Application Development

Managed Services

Data Engineering

Data Science

Machine Learning

Business Intelligence

Data Visualization

AI Strategy & Roadmap

Generative AI Implementations

AI Design & Build MVP

AI Model as a Service

AI driven Application Development

SPEED METHODOLOGY

Inspired by publicis sapient



STRATEGY

Define goals, understand your market, and test hypotheses to find the winning digital path for lasting competitive advantage.



PRODUCT

Be the innovation engine. Develop products and services that adapt quickly. Embrace rapid iteration to deliver what customers truly need



EXPERIENCE

Design moments that delight. Craft a seamless and positive journey across all touchpoints, from initial spark to loyal customer.



ENGINEERING

Build to power your dreams. Turn strategies and products into reality with robust technology infrastructure and flawless execution.



DATA

Transform with insights. Harness the power of data to validate assumptions, measure success, and uncover new opportunities to fuel continuous improvement.

DIGITAL CAPABILITIES



ENTERPRISE CAPABILITIES



BEST IN CLASS SOLUTIONS

**Experience
Transformation**

**Idea to MVP
Pre-Seed to Series A**

**Technology
Modernization**

**Platform
Engineering**

**Advanced Data
Analytics**

**Artificial Intelligence
Solutioning**

SIMPLICITY & ENGINEERING AT HEART

1

We imagine.

Design and deliver new digital experiences, revenue streams and business models to meet rising customer expectations and accelerate your growth.

2

We engineer.

Streamline your software engineering to drive greater efficiency and enable resiliency across your products and platforms.

3

We modernize.

Reinvent your applications and Experience for greater agility by taking full advantage of automation, AI and cloud.

4

We manage.

Transform and optimize the heartbeat of your operations, systems and product development to reduce costs and facilitate growth.

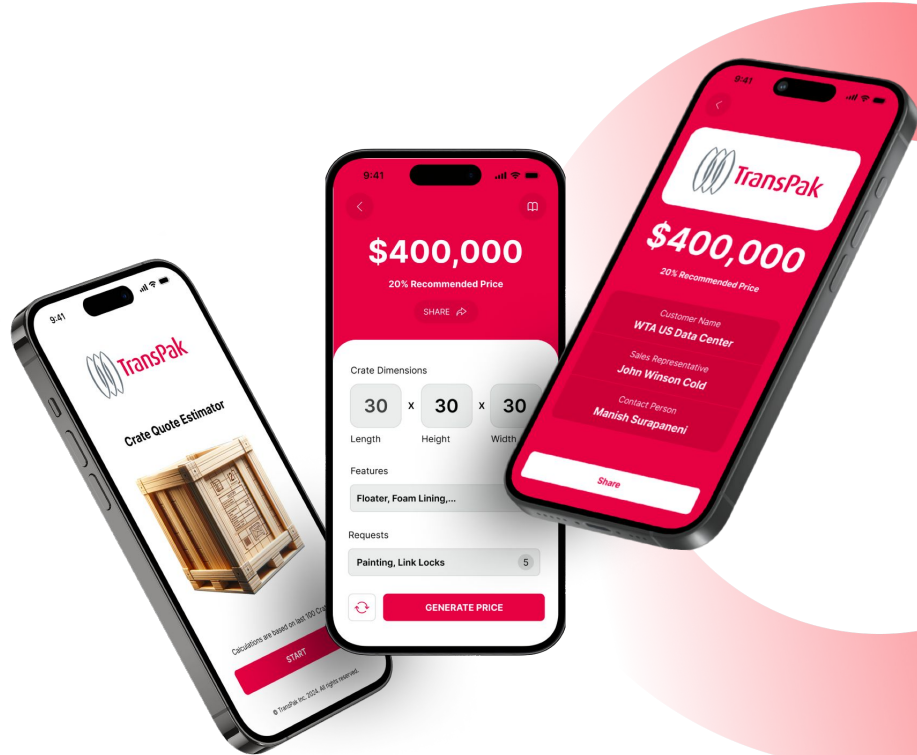
Leader in Tech-Focused packaging, crating, and logistics solutions.

This innovative app takes the guesswork out of quoting. Simply input material sizes, wood type, and desired features.

The app instantly calculates production costs, labor estimates, and generates a competitive quote for your customer. Save time, boost efficiency, and win more business with our user-friendly Crate Price Estimator App.

Technology Partner for

- . Strategy
- . Engineering
- . Experience
- . Data & AI



A human-focused AI to delve intuitive mind, which drives conscious awareness.

Mindspeller leverages a unique platform grounded in free association semantic network theory, surpassing traditional text scraping methods in capturing nuanced human semantic associations.

This approach, validated with a medical grade EEG paradigm, effectively models memory recall, providing deeper insights and precise predictions for exploring human cognitive processes and semantics.

Technology Partner for

- . Strategy
- . Engineering
- . Experience
- . Data & AI





All-in-One Audit & Inspection App for Enterprise Professionals.

GoAudits is a user-friendly auditing application designed for streamlined audits and inspections anytime, anywhere, eliminating the need for paperwork or manual report typing in the office.

This mobile inspections app operates both online and offline, functioning seamlessly on phones and tablets. It enables end-users minimal errors and no training necessary.

Technology Partner for

- . Strategy
- . Engineering
- . Experience
- . Data & AI



Our award-winning technology platform is the engine that powers Analytics solutions.

A single technology platform that enables you to collate and control all your available data to help you.

Quantela provides quantified business intelligence to IT Departments worldwide. It offers end-to-end urban digitization solutions to cities and communities around the world.

Technology Partner for

- . Strategy
- . Engineering
- . Experience
- . Data & AI



A Virtual Cardiology Tech to manage heart health from home,

Get expert care, monitoring, and prescriptions without waiting rooms through the Platform. We monitor your readings remotely and if needed, make adjustments to your prescriptions.

Meet with one of our heart specialists by video or phone. Whatever works for you. Get medications and easy-to-use care tools delivered to your door, without confusing tech.

Technology Partner for

- . Strategy
- . Experience



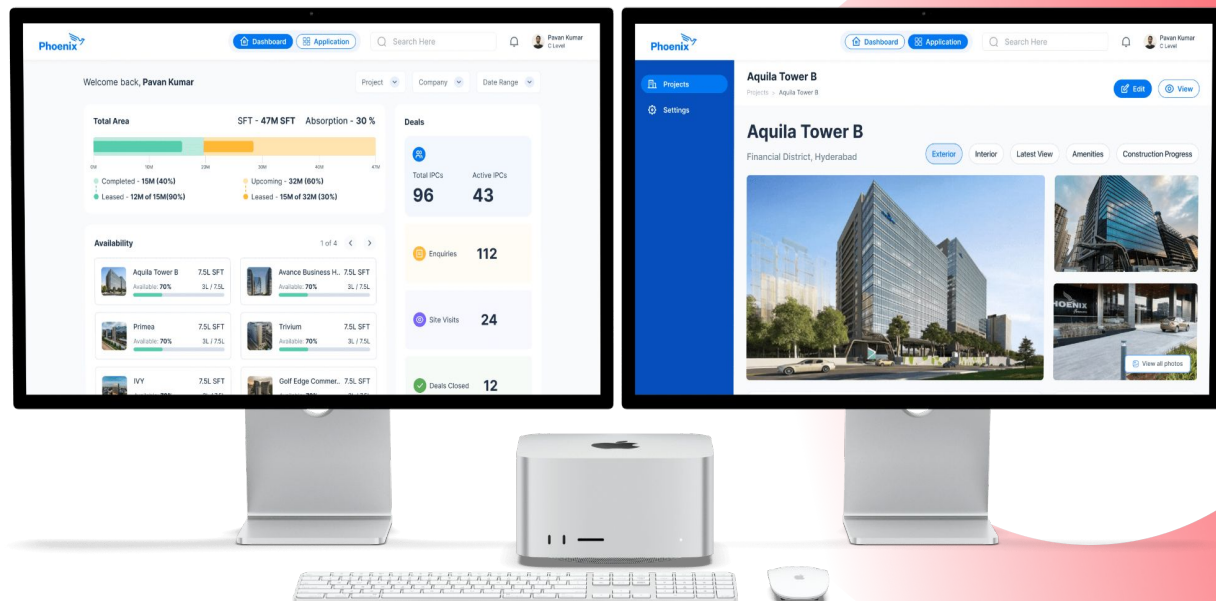
A Leading Commercial Real Estate Giant

Phoenix platform to encompass the entire portfolio of groups, as well as enquiries, sales, and other critical aspects.

From conceptualization to execution, we meticulously designed and developed the entire solution, ensuring a comprehensive end-to-end experience.

Technology Partner for

- . Strategy
- . Engineering
- . Experience
- . Data & AI



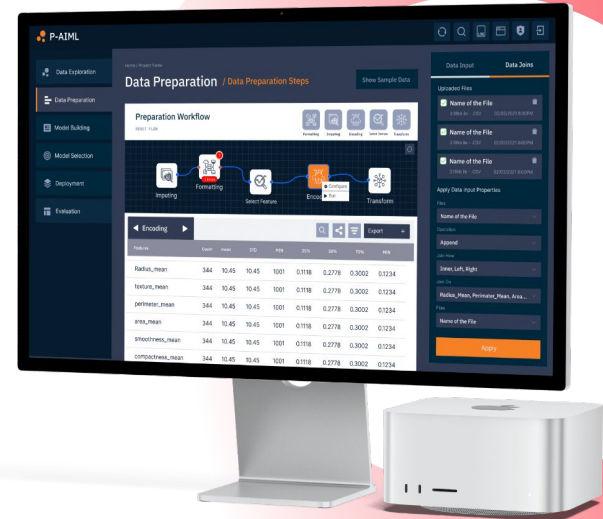
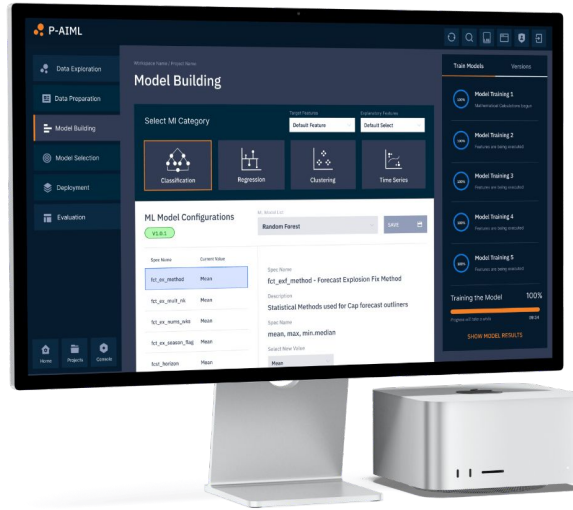
Democratize Data Science No-Code AI Platform

P-AIML empowers any business to unlock the power of data science. This enterprise-grade, no-code platform automates the entire data pipeline, from raw data to actionable insights.

No coding required! Drive better business decisions and democratize access to valuable knowledge.

Technology Partner for

- . Strategy
- . Engineering
- . Experience
- . Data & AI



Tech operational software for janitorial businesses

Swept helps connect you with clients and staff with messaging and translations, manage employees time, and supplies.

Have your supervisors complete inspections and log issues before the end of a shift so you know about it long before your clients do. Swept customers say they save up to 7 hours a day in administrative work.

Technology Partner for

- . Strategy
- . Engineering
- . Experience
- . Data & AI



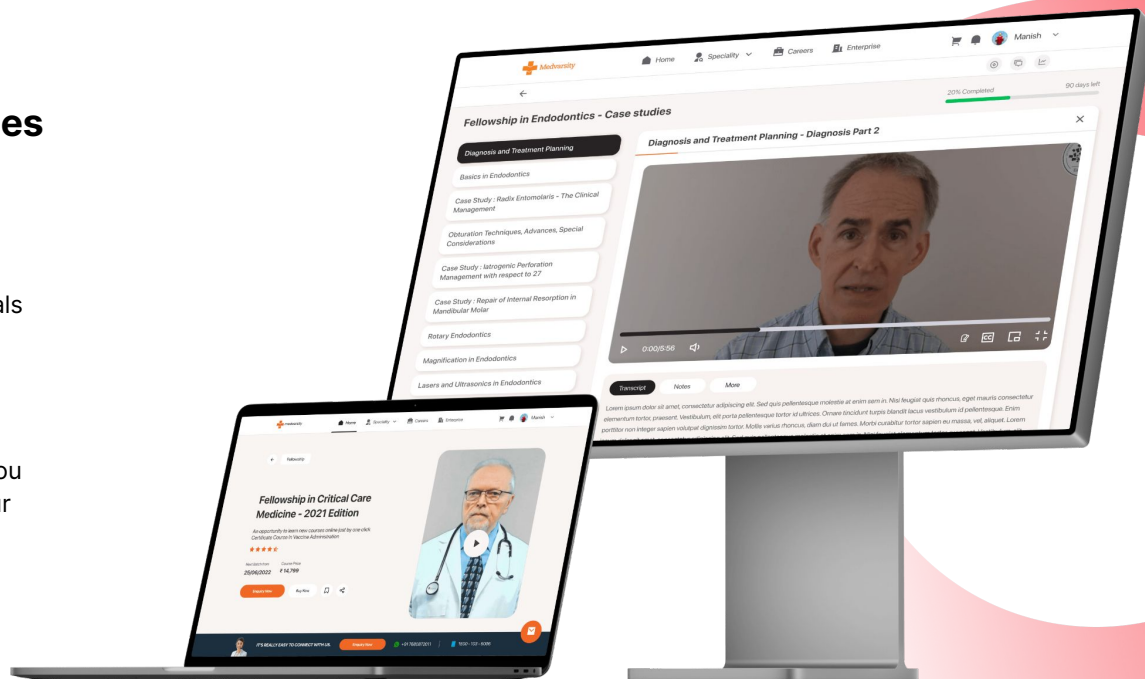
Asia's Largest Medical Courses Learning Platform

Medvarsity is Asia's largest healthcare EdTech company, with over 4 lakh medical professionals trained and certified.

With more than 150 courses in clinical & management areas for doctors, nurses, and general management personnel, we bring to you updated content carefully curated to meet your educational needs.

Technology Partner for

- . Strategy
- . Engineering
- . Experience
- . Data & AI





Apollo Hospitals Upskilling & Assessment Platform

Apollo Hospitals' innovative upskilling platform. This comprehensive program offers healthcare professionals targeted training and development opportunities to stay ahead of the curve.

Expand your skill set, explore career advancement options, and join a global network of healthcare professionals. Invest in your future with Apollo Hospitals Upskilling.

Technology Partner for

- . Strategy
- . Engineering
- . Experience
- . Data & AI



Create visually captivating applications with rich visualization capabilities

Monet is a low-code application development multi-tenant SaaS tool that enables businesses to create a multitude of applications in various B2X2X models, making it an ideal solution for any enterprise looking to digitize and create innovative digital experiences.

Technology Partner for

- . Strategy
- . Engineering
- . Experience
- . Data & AI



THE BRAINS BEHIND



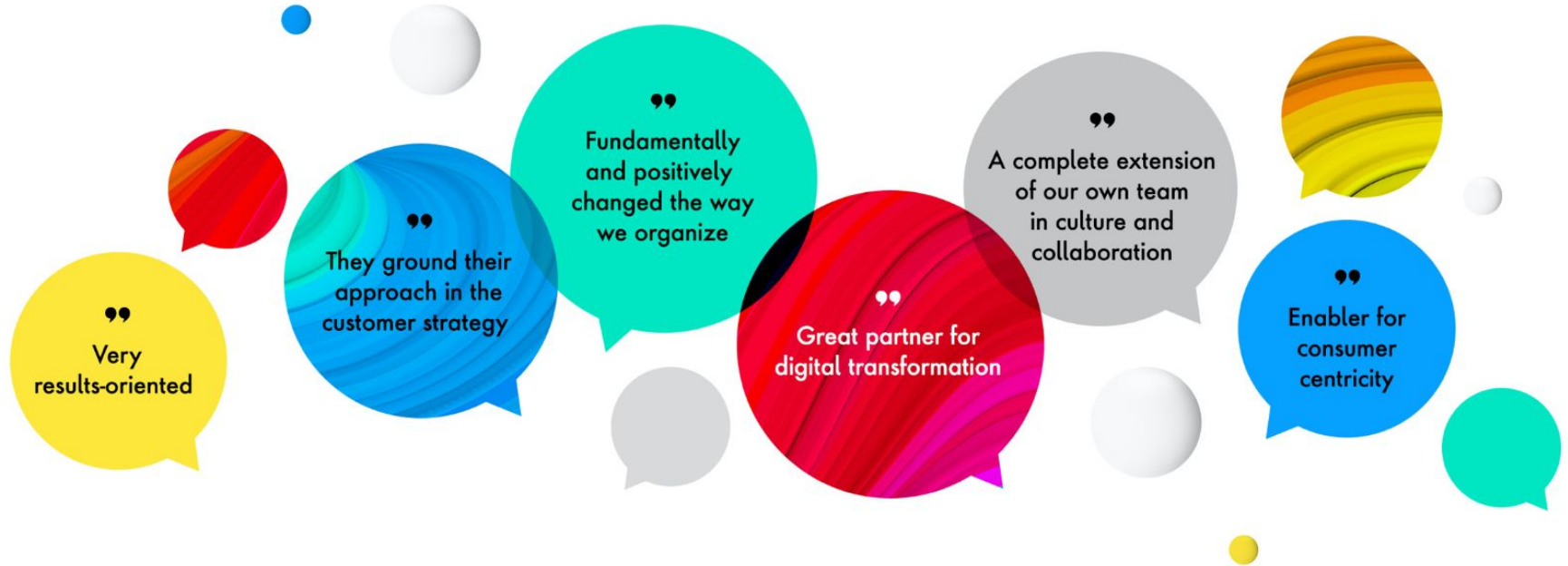
**Solution
Experts**

**Experience
Designers**



**Technology
Rockstars**

WHAT OUR CUSTOMERS SAY?



LOCATIONS



SAN FRANCISCO



LONDON



BERLIN



HYDERABAD

WHY CHOOSE WTA AS TECHNOLOGY PARTNER?

We have the right experience to deliver the right outcomes.

We are an end-to-end partner

From creating a vision to building and refining experiences, we have the end-to-end expertise to walk the road with you — from the boardroom to the server room.

We use our Multi Lens approach to ensure our clients' success.

While there are many "cool ideas" out there, the only ones that matter are the ones your customer will use and the ones that will positively impact your business KPIs. We focus relentlessly on data driven approach to provide realistic and simple customer experience optimizations while progressively enhancing the technical and process Landscape.

We believe in continuous learning and experimentation

There is no way to solve for everything and no time to waste either. Our continuous learning approach allows us to quickly determine what could work (and what won't) and focus.

We understand business and technology, and Discover too

We have deep domain expertise. Through the past few years, we have come to understand your customers, your business, your ecosystem, and your value chain.

We can deliver

We are a global powerhouse with access to Skill Recruits vast array of capabilities. Through our accelerated delivery approach, we've been helping companies evolve, innovate and create ongoing relevance for over 10+ years — and we are continually recognized for our work.

Manish Surapaneni

Founder & CEO

Manish Surapaneni

THANK YOU

Got New Ideas? Send your requirements to Manish@wethinkapp.com

